



Noise Monitoring Result

Day Time (0700 - 1900hrs on normal weekdays)

Location: M1a - Footbridge at EX-Wanchai Harbour Road Sports Centre

Date	Time	Weather	Measurement Noise Level			Baseline Level	Construction Noise Level	Limit Level
			Leq	L10	L90	Leq	Leq	Leq
Unit: dB(A), (30-min)								
31/5/2017	13:50	Fine	79.4	80.1	77.2	72	78	75
8/6/2017	14:00	Fine	80.5	82.6	77.0	72	80	75
13/6/2017	13:50	Cloudy	79.3	81.2	75.1	72	78	75
22/6/2017	13:55	Fine	79.6	81.4	76.8	72	79	75
26/6/2017	16:11	Fine	81.7	81.9	77.9	72	81	75

Location: M2b - Noon-day gun area

Date	Time	Weather	Measurement Noise Level			Baseline Level	Construction Noise Level	Limit Level
			Leq	L10	L90	Leq	Leq	Leq
Unit: dB(A), (30-min)								
31/5/2017	15:10	Fine	68.9	70.5	66.0	68	63	75
8/6/2017	15:20	Fine	70.3	72.4	66.5	68	67	75
12/6/2017	10:45	Cloudy	71.3	73.4	66.9	68	69	75
23/6/2017	10:55	Fine	68.1	69.4	66.3	68	58	75
28/6/2017	11:05	Fine	68.9	70.0	66.9	68	63	75

Location: M3a - Tung Lo Wan Fire Station

Date	Time	Weather	Measurement Noise Level			Baseline Level	Construction Noise Level	Limit Level
			Leq	L10	L90	Leq	Leq	Leq
Unit: dB(A), (30-min)								
1/6/2017	13:00	Cloudy	67.3	68.7	65.7	69	67	75
6/6/2017	09:00	Cloudy	65.2	67.2	63.1	69	65	75
14/6/2017	14:00	Cloudy	66.1	67.7	63.9	69	66	75
22/6/2017	09:55	Fine	66.2	67.5	64.3	69	66	75
28/6/2017	13:40	Fine	65.8	67.0	64.4	69	66	75

Location: M4b - Victoria Centre

Date	Time	Weather	Measurement Noise Level			Baseline Noise Level	Construction Noise Level	Limit Level
			Leq	L10	L90	Leq	Leq	Leq
Unit: dB(A), (30min)								
1/6/2017	13:45	Cloudy	69.8	71.5	67.4	67	66	75
6/6/2017	09:55	Cloudy	66.1	67.3	64.6	67	66	75
13/6/2017	11:25	Cloudy	74.6	79.6	67.2	67	74	75
22/6/2017	10:40	Fine	66.7	68.0	65.3	67	67	75
28/6/2017	14:25	Fine	68.5	69.5	66.1	67	62	75

Location: M5b - City Garden

Date	Time	Weather	Measurement Noise Level			Baseline Level	Construction Noise Level	Limit Level
			Leq	L10	L90	Leq	Leq	Leq
Unit: dB(A), (30min)								
1/6/2017	14:30	Cloudy	70.9	72.6	68.6	68	68	75
6/6/2017	10:55	Cloudy	75.4	77.4	71.4	68	75	75
14/6/2017	14:50	Cloudy	73.6	74.3	71.4	68	72	75
22/6/2017	11:20	Fine	73.6	76.0	71.1	68	72	75
28/6/2017	15:10	Fine	72.9	74.3	70.7	68	71	75

Location: M6 - HK Baptist Church Henrietta Secondary School

Date	Time	Weather	Measurement Noise Level			Baseline Level	Construction Noise Level	Limit Level
			Leq	L10	L90	Leq	Leq	Leq
Unit: dB(A), (30-min)								
1/6/2017	15:05	Cloudy	68.2	69.2	66.5	71	68	70
8/6/2017	10:03	Fine	69.3	70.1	65.4	71	69	65
16/6/2017	09:30	Cloudy	65.8	67.5	63.8	71	66	65
19/6/2017	10:45	Cloudy	67.9	68.6	66.0	71	68	65
28/6/2017	15:50	Fine	67.5	68.9	65.7	71	68	70



Noise Monitoring Result

Day Time (0700 - 1900hrs on normal weekdays)

Location: M7e - International Finance Centre (Eastern End of Podium) (Reference Station)

Date	Time	Weather	Measurement Noise Level			Baseline Level	Construction Noise Level	Limit Level
			Leq	L10	L90	Leq	Leq	Leq
Unit: dB(A), (30-min)								
2/6/2017	15:10	Fine	68.9	70.8	66.6	67	65	N/A
6/6/2017	13:50	Cloudy	65.4	67.1	62.4	67	65	N/A
14/6/2017	10:30	Cloudy	66.2	67.6	63.7	67	66	N/A
22/6/2017	16:00	Fine	75.4	78.6	72.1	67	75	N/A
28/6/2017	09:30	Fine	69.4	71.5	65.5	67	66	N/A

Location: M7w - International Finance Centre (Western End of Podium)

Date	Time	Weather	Measurement Noise Level			Baseline Level	Construction Noise Level	Limit Level
			Leq	L10	L90	Leq	Leq	Leq
Unit: dB(A), (30-min)								
2/6/2017	14:30	Cloudy	65.9	67.3	63.9	69	66	75
6/6/2017	14:30	Cloudy	64.7	66.0	62.9	69	65	75
14/6/2017	09:58	Cloudy	66.7	68.0	64.9	69	67	75
22/6/2017	16:32	Fine	66.2	68.7	63.4	69	66	75
28/6/2017	10:05	Fine	66.2	67.6	64.1	69	66	75

Location: M8 - City Hall

Date	Time	Weather	Measurement Noise Level			Baseline Level	Construction Noise Level	Limit Level
			Leq	L10	L90	Leq	Leq	Leq
Unit: dB(A), (30-min)								
2/6/2017	13:40	Fine	64.9	67.0	60.8	64	58	70
6/6/2017	15:20	Cloudy	63.4	66.3	58.1	64	63	70
14/6/2017	15:45	Cloudy	65.7	68.0	62.3	64	61	70
22/6/2017	15:10	Fine	66.2	68.8	56.9	64	62	70
28/6/2017	08:45	Fine	60.1	62.0	56.7	64	60	70



Noise Monitoring Result

Day Time (0700 - 1900hrs on normal weekdays)

Location: M1a - Footbridge at EX-Wanchai Harbour Road Sports Centre

Date	Time	Weather	Measurement Noise Level			Baseline Level	Construction Noise Level	Limit Level
			Leq	L10	L90	Leq	Leq	Leq
Unit: dB(A), (30-min)								
7/7/2017	10:35	Cloudy	87.4	93.0	75.4	72	87	75
13/7/2017	09:35	Fine	79.3	80.9	76.7	72	78	75
20/7/2017	10:20	Fine	83.8	88.3	77.4	72	83	75
26/7/2017	09:50	Fine	85.2	87.3	81.7	72	85	75

Location: M2b - Noon-day gun area

Date	Time	Weather	Measurement Noise Level			Baseline Level	Construction Noise Level	Limit Level
			Leq	L10	L90	Leq	Leq	Leq
Unit: dB(A), (30-min)								
6/7/2017	15:50	Cloudy	70.2	73.5	66.7	68	67	75
10/7/2017	11:00	Fine	68.7	70.3	66.5	68	62	75
21/7/2017	13:05	Fine	68.5	70.1	66.4	68	61	75
26/7/2017	15:20	Fine	68.2	69.5	66.1	68	59	75

Location: M3a - Tung Lo Wan Fire Station

Date	Time	Weather	Measurement Noise Level			Baseline Level	Construction Noise Level	Limit Level
			Leq	L10	L90	Leq	Leq	Leq
Unit: dB(A), (30-min)								
4/7/2017	09:45	Cloudy	67.5	69.3	64.9	69	68	75
13/7/2017	13:50	Fine	65.1	66.7	62.9	69	65	75
21/7/2017	10:05	Fine	65.9	67.4	64.0	69	66	75
25/7/2017	08:45	Fine	65.3	67.7	62.3	69	65	75

Location: M4b - Victoria Centre

Date	Time	Weather	Measurement Noise Level			Baseline Noise Level	Construction Noise Level	Limit Level
			Leq	L10	L90	Leq	Leq	Leq
Unit: dB(A), (30min)								
4/7/2017	08:55	Cloudy	65.8	66.9	64.4	67	66	75
13/7/2017	14:35	Fine	66.9	67.8	64.6	67	67	75
21/7/2017	10:50	Fine	71.0	74.9	65.3	67	69	75
25/7/2017	09:30	Fine	66.3	67.6	64.8	67	66	75

Location: M5b - City Garden

Date	Time	Weather	Measurement Noise Level			Baseline Level	Construction Noise Level	Limit Level
			Leq	L10	L90	Leq	Leq	Leq
Unit: dB(A), (30min)								
4/7/2017	10:45	Cloudy	72.9	74.0	71.2	68	71	75
13/7/2017	15:15	Fine	72.6	73.5	71.5	68	71	75
21/7/2017	14:00	Fine	74.0	75.7	70.8	68	73	75
25/7/2017	14:25	Fine	75.1	78.1	71.1	68	74	75

Location: M6 - HK Baptist Church Henrietta Secondary School

Date	Time	Weather	Measurement Noise Level			Baseline Level	Construction Noise Level	Limit Level
			Leq	L10	L90	Leq	Leq	Leq
Unit: dB(A), (30-min)								
4/7/2017	11:30	Cloudy	66.5	67.9	64.8	71	67	70
13/7/2017	15:55	Fine	65.9	66.7	65.0	71	66	70
18/7/2017	10:00	Cloudy	65.7	68.2	62.6	71	66	65
25/7/2017	15:00	Fine	67.0	68.3	64.9	71	67	70



Noise Monitoring Result

Day Time (0700 - 1900hrs on normal weekdays)

Location: M7e - International Finance Centre (Eastern End of Podium) (Reference Station)

Date	Time	Weather	Measurement Noise Level			Baseline Level	Construction Noise Level	Limit Level
			Leq	L10	L90	Leq	Leq	Leq
Unit: dB(A), (30-min)								
3/7/2017	10:15	Cloudy	64.5	67.3	63.1	67	65	N/A
10/7/2017	13:55	Fine	68.1	70.0	64.9	67	62	N/A
18/7/2017	14:05	Cloudy	69.8	72.4	65.9	67	67	N/A
24/7/2017	14:05	Fine	70.5	73.1	67.1	67	68	N/A

Location: M7w - International Finance Centre (Western End of Podium)

Date	Time	Weather	Measurement Noise Level			Baseline Level	Construction Noise Level	Limit Level
			Leq	L10	L90	Leq	Leq	Leq
Unit: dB(A), (30-min)								
4/7/2017	15:30	Cloudy	65.5	67.0	63.2	69	66	75
10/7/2017	14:30	Fine	66.7	68.5	64.2	69	67	75
18/7/2017	14:40	Cloudy	65.7	67.7	62.4	69	66	75
24/7/2017	14:40	Fine	66.7	68.7	63.8	69	67	75

Location: M8 - City Hall

Date	Time	Weather	Measurement Noise Level			Baseline Level	Construction Noise Level	Limit Level
			Leq	L10	L90	Leq	Leq	Leq
Unit: dB(A), (30-min)								
7/7/2017	09:50	Cloudy	59.3	61.1	56.6	64	59	70
10/7/2017	15:25	Fine	58.2	60.3	55.4	64	58	70
19/7/2017	10:40	Fine	59.8	62.3	56.2	64	60	70
24/7/2017	15:55	Fine	61.3	63.4	57.5	64	61	70



Noise Monitoring Result

Day Time (0700 - 1900hrs on normal weekdays)

Location: M1a - Footbridge at EX-Wanchai Harbour Road Sports Centre

Date	Time	Weather	Measurement Noise Level			Baseline Level	Construction Noise Level	Limit Level
			Leq	L10	L90	Leq	Leq	Leq
Unit: dB(A), (30-min)								
4/8/2017	14:45	Cloudy	82.2	84.7	77.5	72	82	75
7/8/2017	13:15	Fine	76.1	78.0	73.5	72	74	75
17/8/2017	09:55	Fine	76.1	78.5	72.4	72	74	75
25/8/2017	09:45	Fine	75.0	76.6	72.8	72	72	75

Location: M2b - Noon-day gun area

Date	Time	Weather	Measurement Noise Level			Baseline Level	Construction Noise Level	Limit Level
			Leq	L10	L90	Leq	Leq	Leq
Unit: dB(A), (30-min)								
1/8/2017	13:45	Fine	67.6	68.9	65.9	68	68	75
7/8/2017	14:20	Fine	69.6	71.7	66.4	68	65	75
17/8/2017	10:50	Fine	69.3	71.9	65.8	68	64	75
25/8/2017	11:10	Fine	68.3	70.9	65.2	68	60	75

Location: M3a - Tung Lo Wan Fire Station

Date	Time	Weather	Measurement Noise Level			Baseline Level	Construction Noise Level	Limit Level
			Leq	L10	L90	Leq	Leq	Leq
Unit: dB(A), (30-min)								
1/8/2017	14:25	Fine	64.6	66.1	62.7	69	65	75
8/8/2017	09:30	Fine	69.0	70.1	67.4	69	56	75
17/8/2017	13:55	Fine	65.2	66.2	63.1	69	65	75
24/8/2017	13:25	Fine	65.1	66.8	63.4	69	65	75

Location: M4b - Victoria Centre

Date	Time	Weather	Measurement Noise Level			Baseline Noise Level	Construction Noise Level	Limit Level
			Leq	L10	L90	Leq	Leq	Leq
Unit: dB(A), (30min)								
1/8/2017	10:35	Fine	66.3	67.5	65.0	67	66	75
7/8/2017	15:15	Fine	65.8	67.0	64.3	67	66	75
17/8/2017	14:35	Fine	64.8	66.2	63.1	67	65	75
24/8/2017	14:05	Fine	66.2	67.8	64.2	67	66	75

Location: M5b - City Garden

Date	Time	Weather	Measurement Noise Level			Baseline Level	Construction Noise Level	Limit Level
			Leq	L10	L90	Leq	Leq	Leq
Unit: dB(A), (30min)								
1/8/2017	15:00	Fine	70.9	74.4	66.8	68	68	75
8/8/2017	10:10	Fine	73.0	75.2	70.6	68	71	75
17/8/2017	15:10	Fine	72.2	73.7	70.4	68	70	75
24/8/2017	14:50	Fine	71.0	72.3	69.5	68	68	75

Location: M6 - HK Baptist Church Henrietta Secondary School

Date	Time	Weather	Measurement Noise Level			Baseline Level	Construction Noise Level	Limit Level
			Leq	L10	L90	Leq	Leq	Leq
Unit: dB(A), (30-min)								
1/8/2017	15:35	Fine	65.9	67.1	64.4	71	66	70
8/8/2017	10:50	Fine	67.3	68.5	64.7	71	67	70
17/8/2017	15:45	Fine	67.2	68.4	65.9	71	67	70
24/8/2017	15:30	Fine	64.7	66.1	63.1	71	65	70



Noise Monitoring Result

Day Time (0700 - 1900hrs on normal weekdays)

Location: M7e - International Finance Centre (Eastern End of Podium) (Reference Station)

Date	Time	Weather	Measurement Noise Level			Baseline Level	Construction Noise Level	Limit Level
			Leq	L10	L90	Leq	Leq	Leq
Unit: dB(A), (30-min)								
31/7/2017	13:40	Fine	70.0	72.9	67.5	67	67	N/A
7/8/2017	10:15	Fine	69.4	70.5	66.4	67	66	N/A
14/8/2017	14:10	Fine	67.8	69.6	65.3	67	61	N/A
22/8/2017	14:55	Fine	66.8	68.1	64.7	67	67	N/A

Location: M7w - International Finance Centre (Western End of Podium)

Date	Time	Weather	Measurement Noise Level			Baseline Level	Construction Noise Level	Limit Level
			Leq	L10	L90	Leq	Leq	Leq
Unit: dB(A), (30-min)								
31/7/2017	14:15	Fine	66.0	67.5	63.7	69	66	75
7/8/2017	10:50	Fine	65.9	68.0	63.5	69	66	75
14/8/2017	14:45	Fine	65.2	66.8	63.2	69	65	75
22/8/2017	14:20	Fine	65.1	66.3	63.6	69	65	75

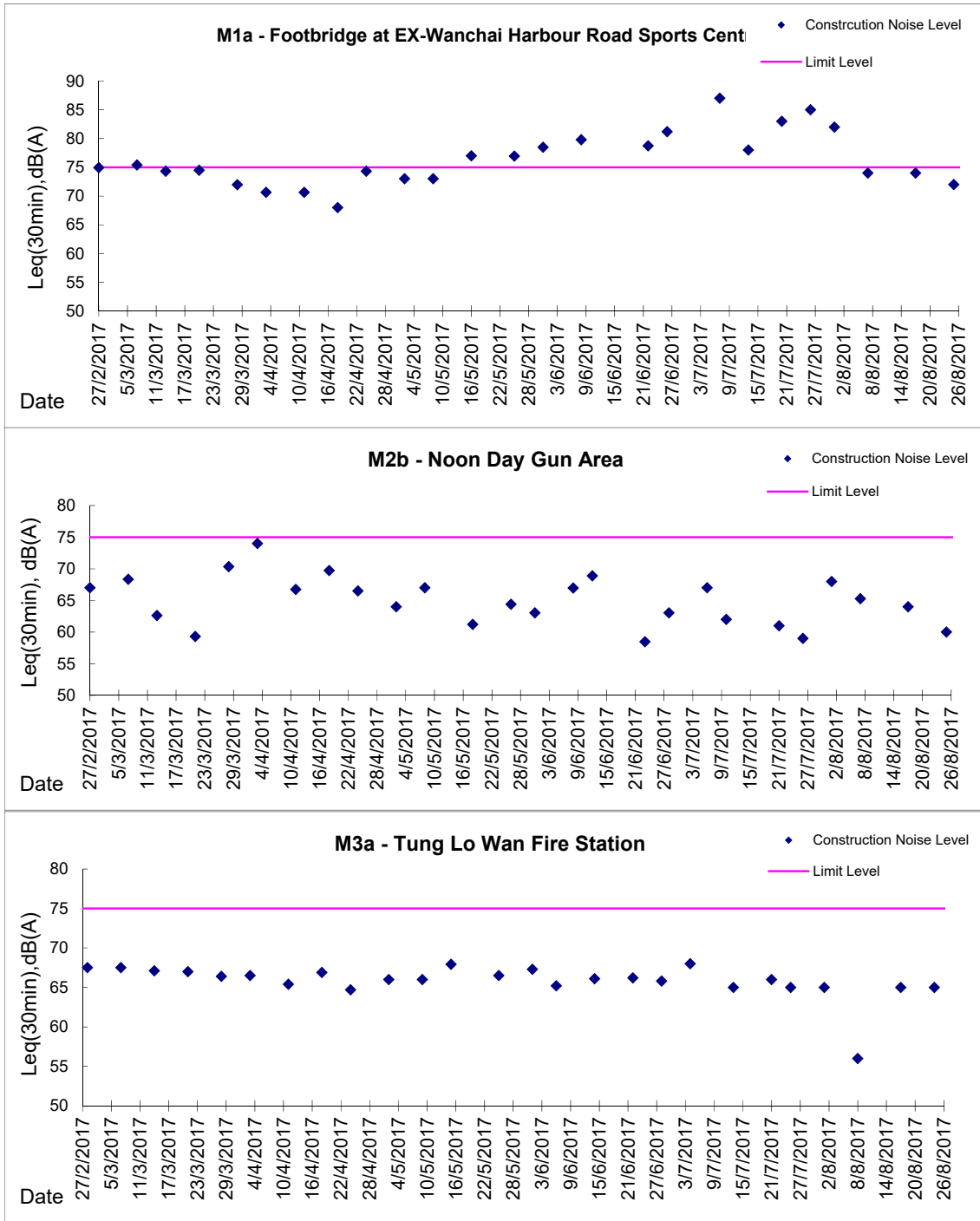
Location: M8 - City Hall

Date	Time	Weather	Measurement Noise Level			Baseline Level	Construction Noise Level	Limit Level
			Leq	L10	L90	Leq	Leq	Leq
Unit: dB(A), (30-min)								
31/7/2017	15:00	Fine	58.3	60.0	55.8	64	58	70
7/8/2017	11:30	Fine	58.9	60.6	55.6	64	59	70
14/8/2017	15:40	Fine	58.0	59.7	55.5	64	58	70
24/8/2017	10:45	Fine	60.2	62.7	56.3	64	60	70



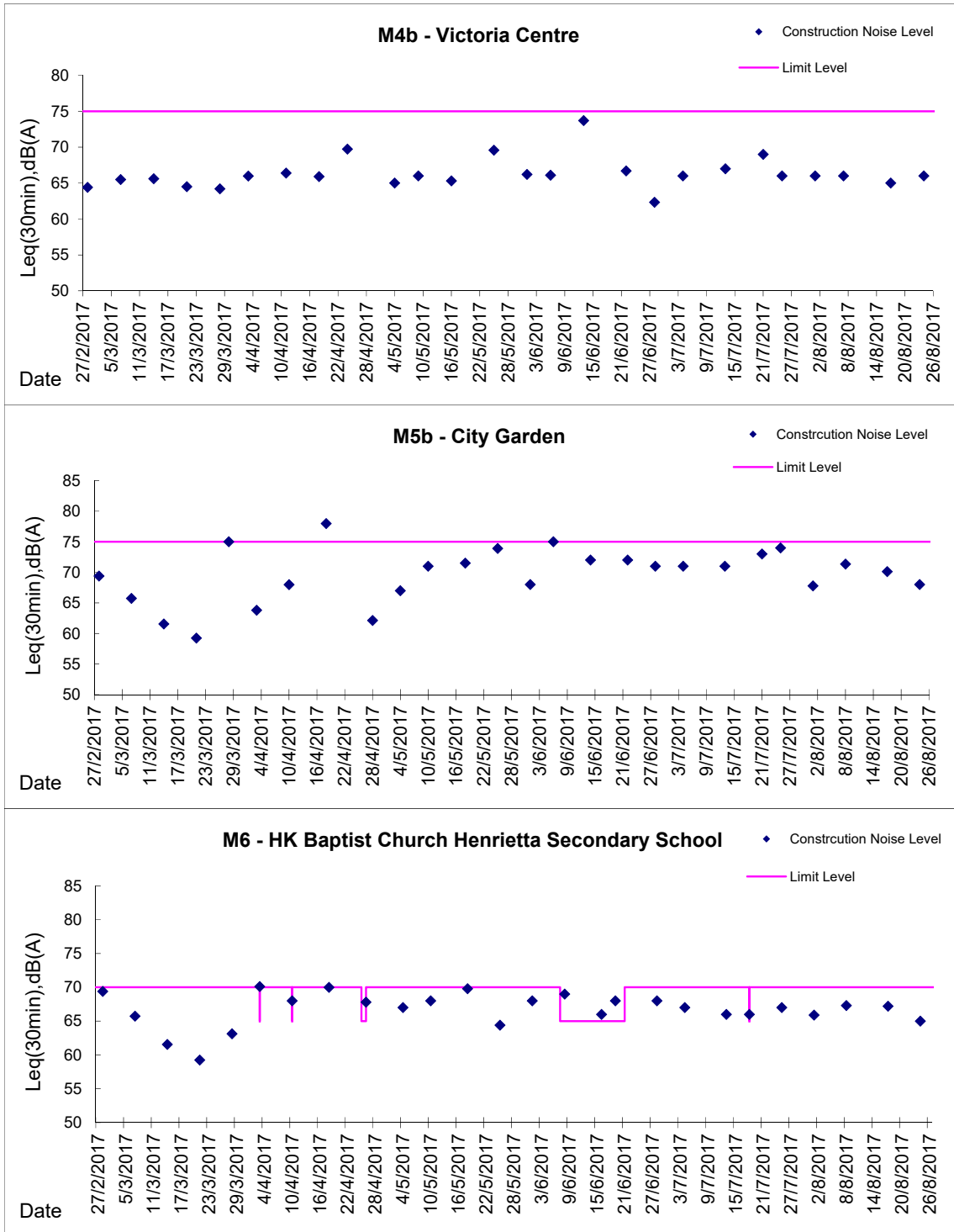
Graphic Presentation of Noise Monitoring Result

Day Time (0700 - 1900hrs on normal weekdays)



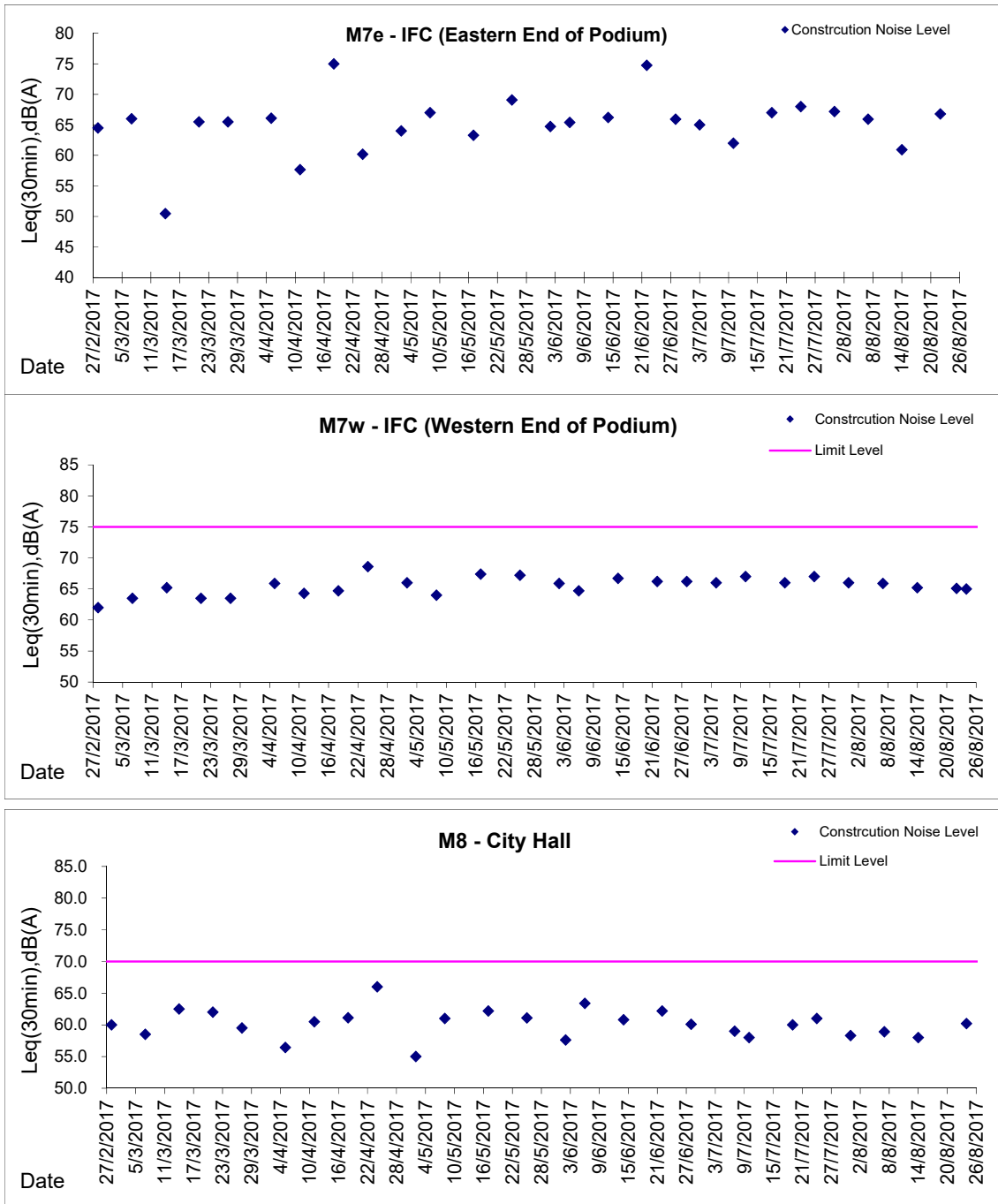
Graphic Presentation of Noise Monitoring Result

Day Time (0700 - 1900hrs on normal weekdays)



Graphic Presentation of Noise Monitoring Result

Day Time (0700 - 1900hrs on normal weekdays)



* Remark: M7e - IFC (Eastern End of Podium) is a reference monitoring station